

Quality. Experience. Growth.



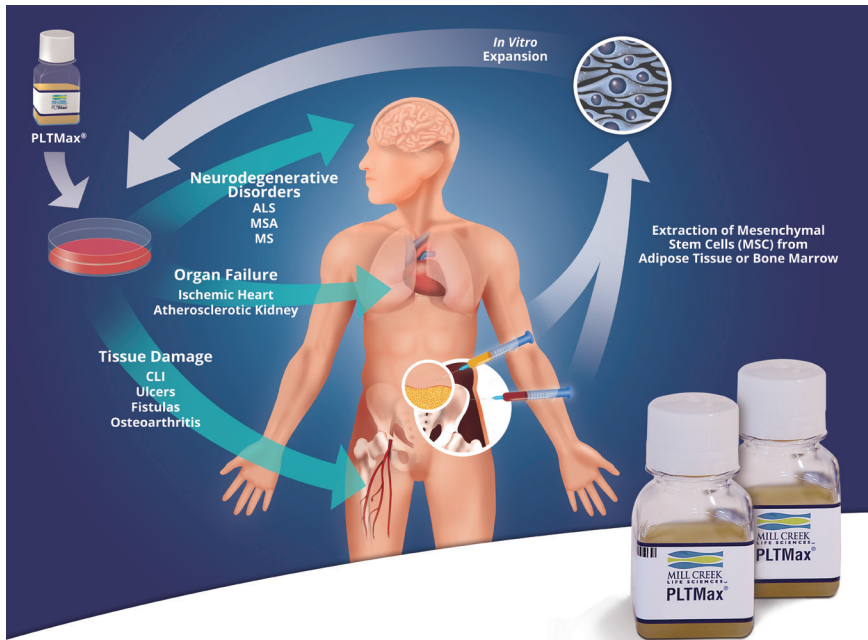
# PLTMax<sup>®</sup>

## Partner with us!

### We offer the best platelet lysate available!

Stem cells are changing medicine, and we want to be your partner in change. **PLTMax<sup>®</sup>** has the proven track record of successful clinical use that you demand.





## Trusted and Tested!

We do more than deliver the highest quality products to you — we provide support for your clinical research as well.

**PLTMax®** has been a critical ingredient in Phase I, Phase II and Phase III trials in North America, Europe, South America, Middle East, Asia and Australia. It has been used to grow cells for hundreds of patient samples, and used to culture bone marrow and adipose derived MSC and other primary cell cultures. The first GMP platelet lysate on the market, the best on the market and a master file with the FDA to accelerate your application. Our quality and experience mean more growth for you!

## We make it easy for you!

From bench to bedside, we are with you all the way!

**Mill Creek Life Sciences** is dedicated to meeting ALL quality requirements to serve our customers. GMP media supplements are our only business so **PLTMax®** is available when you need it, as is our support. Visit our website, request a sample and see the **PLTMax®** difference!

*Mill Creek Life Sciences provides the tools and technologies to support the development and application of cellular and biologic therapeutics. Mill Creek technology was licensed from discoveries at Mayo Clinic, one of the world's leading non-profit medical centers. Mayo Clinic's Rochester campus is located adjacent to Mill Creek Life Sciences. Both organizations are committed to discovering and applying innovative approaches to patient care.*



Mill Creek Life Sciences  
221 1st Ave, SW, Suite 209  
Rochester, MN 55902  
507-287-6257

[www.millcreeklife.com](http://www.millcreeklife.com)



Research grade PLTMax is also available for purchase from EMD Millipore: [www.emdmillipore.com](http://www.emdmillipore.com)